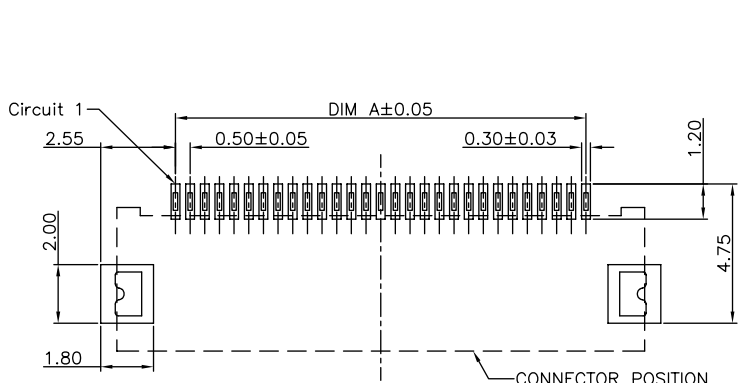
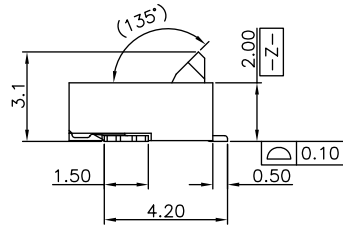
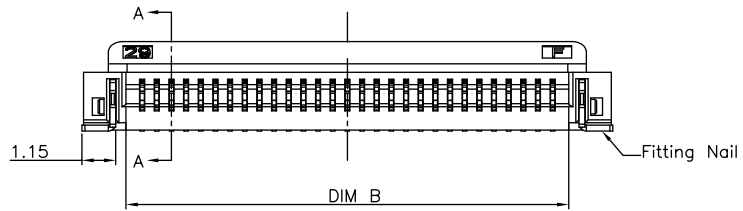
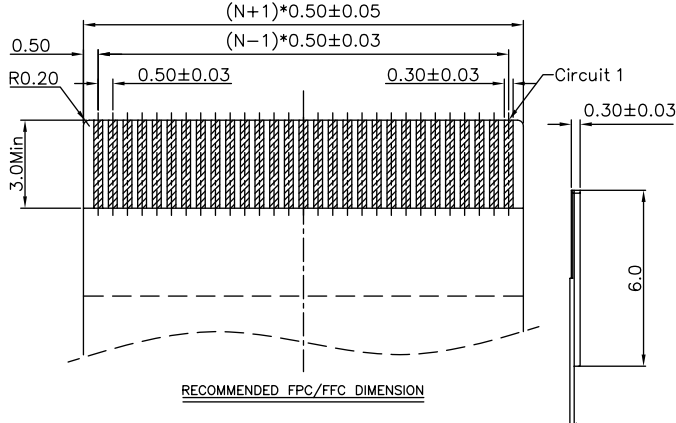


SECTION A-A
SCALE 1:1



RECOMMENDED P.C.B PATTERN LAYOUT



RECOMMENDED FPC/FFC DIMENSION

Specifications:

Housing: LCP UL94-V0 Color: Nature
 Cove: LCP UL94-V0 Color: Black
 Contact: Phosphor Bronze
 Operating Voltage: 50V AC/DC
 Current Rating: 0.5A AC/DC
 Withstand Voltage: 200V AC/Minute
 Contact Resistance: $\leq 20m\Omega$
 Insulation resistance: $\geq 100m\Omega$
 Operating Temperature: $-25^{\circ}C \sim +85^{\circ}C$

CKT	DIM=A	DIM=B	DIM=C	DIM=D	CKT	DIM=A	DIM=B	DIM=C	DIM=D
4P	1.5	2.6	5.5	5.6	33P	16.0	17.1	20.0	20.1
5P	2.0	3.1	6.0	6.1	34P	16.5	17.6	20.5	20.6
6P	2.5	3.6	6.5	6.6	35P	17.0	18.1	21.0	21.1
7P	3.0	4.1	7.0	7.1	36P	17.5	18.6	21.5	21.6
8P	3.5	4.6	7.5	7.6	37P	18.0	19.1	22.0	22.1
9P	4.0	5.1	8.0	8.1	38P	18.5	19.6	22.5	22.6
10P	4.5	5.6	8.5	8.6	39P	19.0	20.1	23.0	23.1
11P	5.0	6.1	9.0	9.1	40P	19.5	20.6	23.5	23.6
12P	5.5	6.6	9.5	9.6	41P	20.0	21.1	24.0	24.1
13P	6.0	7.1	10.0	10.1	42P	20.5	21.6	24.5	24.6
14P	6.5	7.6	10.5	10.6	43P	21.0	22.1	25.0	25.1
15P	7.0	8.1	11.0	11.1	44P	21.5	22.6	25.5	25.6
16P	7.5	8.6	11.5	11.6	45P	22.0	23.1	26.0	26.1
17P	8.0	9.1	12.0	12.1	46P	22.5	23.6	26.5	26.6
18P	8.5	9.6	12.5	12.6	47P	23.0	24.1	27.0	27.1
19P	9.0	10.1	13.0	13.1	48P	23.5	24.6	27.5	27.6
20P	9.5	10.6	13.5	13.6	49P	24.0	25.1	28.0	28.1
21P	10.0	11.1	14.0	14.1	50P	24.5	25.6	28.5	28.6
22P	10.5	11.6	14.5	14.6	51P	25.0	26.1	29.0	29.1
23P	11.0	12.1	15.0	15.1	52P	25.5	26.6	29.5	29.6
24P	11.5	12.6	15.5	15.6	53P	26.0	27.1	30.0	30.1
25P	12.0	13.1	16.0	16.1	54P	26.5	27.6	30.5	30.6
26P	12.5	13.6	16.5	16.6	55P	27.0	28.1	31.0	31.1
27P	13.0	14.1	17.0	17.1	56P	27.5	28.6	31.5	31.6
28P	13.5	14.6	17.5	17.6	57P	28.0	29.1	32.0	32.1
29P	14.0	15.1	18.0	18.1	58P	28.5	29.6	32.5	32.6
30P	14.5	15.6	18.5	18.6	59P	29.0	30.1	33.0	33.1
31P	15.0	16.1	19.0	19.1	60P	29.5	30.6	33.5	33.6
32P	15.5	16.6	19.5	19.6					

一般公差
TOLERANCES
X. ± 0.40 .XX ± 0.20
.X ± 0.30 .XXX ± 0.10
ANGLES $\pm 2^{\circ}$

深圳市宏利电子有限公司
Shenzhen Holy Electronic Co.,Ltd

檢驗尺寸標示
SYMBOLS \odot \ominus INDICATE
CLASSIFICATION DIMENSION

工程圖號 FPC0520HX-nP 制圖(DR) *10/03/22
品名 FPC0.5 - nP H2.0 前插后掀 審核(CHKD)

\odot MARK IS CRITICAL DIM.
 \ominus MARK IS MAJOR DIM.

TITLE FPC0.5mm Pitch H=2.0 Easy-on Back-Flip ZIF CONN 核准(APPD) Rigo Lu

表面處理 (FINISH)

比例 (SCALE) 1:1 單位 (UNITS) mm 張數 (SHEET) 1 OF 1 尺寸 (SIZE) A4 版數 (REV) 0

REV	REVISION DESCRIPTION	DATE	SIGNATURE