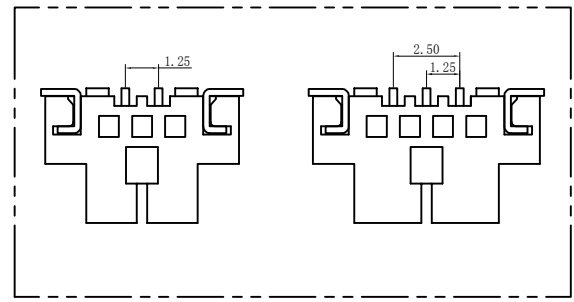
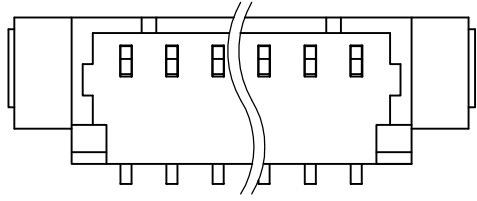
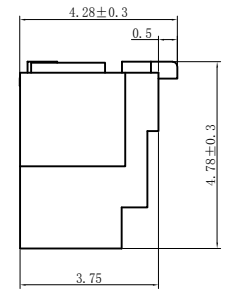
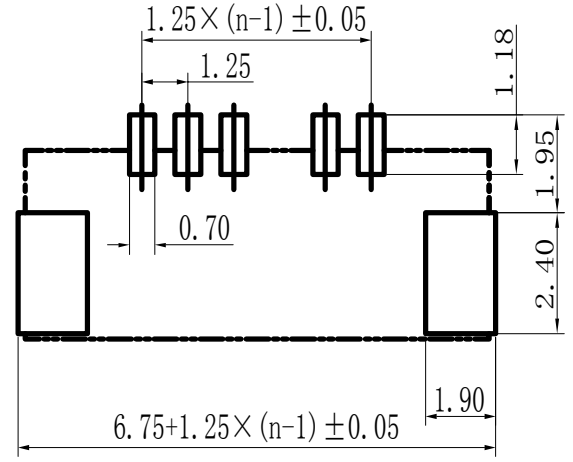


SECTION A-A



Specifications:
 Housing: LCP UL94-V0 Color: Nature
 Contact: Phosphor Bronze
 Operating Voltage: 50V AC(rms)/DC
 Current Rating: 0.5A AC(rms)/DC
 Withstand Voltage: 200V AC/rms
 Contact Resistance: 40mΩ max
 Insulation resistance: 800mΩ
 Operating Temperature: -25℃ ~ +85℃

P 数	DIM=A	DIM=B	DIM=C
002	1.25		7.62
003	2.50		8.87
004	3.75	2.50	10.12
005	5.00	3.75	11.37
006	6.25	5.00	12.62
007	7.50	6.25	13.87
008	8.75	7.50	15.12
009	10.00	8.75	16.37
010	11.25	10.00	17.62
011	12.50	11.25	18.87
012	13.75	12.50	20.12
013	15.00	13.75	21.37
014	16.25	15.00	22.62
015	17.50	16.25	23.87
016	18.75	17.50	25.12
017	20.00	18.75	26.37
018	21.25	20.00	27.62
019	22.50	21.25	28.87
020	23.75	22.50	30.12



PC BOARD LAYOUT

一般公差 TOLERANCES X ±0.40 XX ±0.20 .X ±0.30 .XXX ±0.10 ANGLES ±2°		深圳市宏利电子有限公司 Shenzhen Holy Electronic Co.,Ltd	
检验尺寸标示 SYMBOLS INDICATE CLASSIFICATION DIMENSION MARK IS CRITICAL DIM. MARK IS MAJOR DIM.	工程图号 MX125LB-nP	制图 (DR) '08/5/16 审核 (CHKD)	
表面处理 (FINISH)	品名 MX1.25mm - nP 立贴	核准 (APPD) Rigo Lu	
修订 (REV)	修改摘要 (REVISION DESCRIPTION)	日期 (DATE)	签名 (SIGNATURE)
		比例 (SCALE) 1:1	单位 (UNITS) mm
			张数 (SHEET) 1 OF 1
			尺寸 (SIZE) A4
			版本 (REV) 0

修订 (REV)	修改摘要 (REVISION DESCRIPTION)	日期 (DATE)	签名 (SIGNATURE)